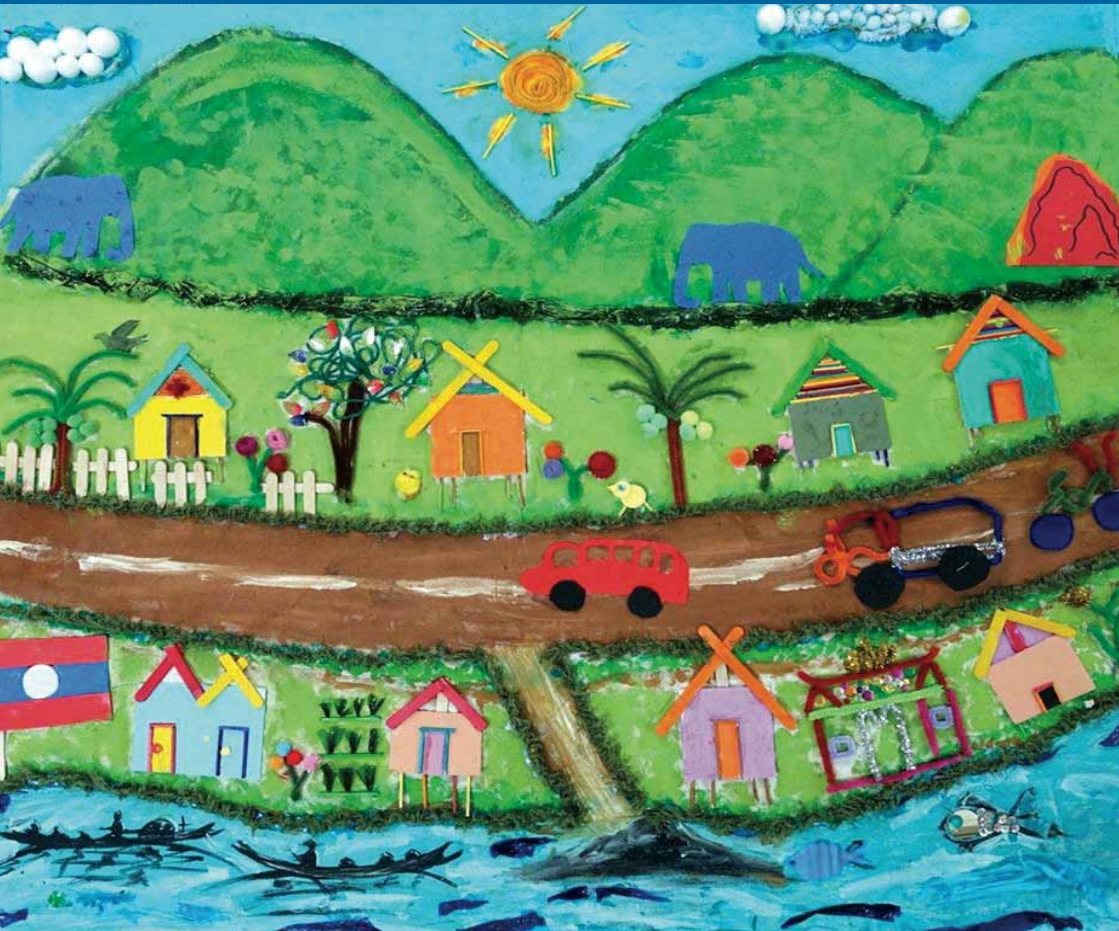


# my community

What does it look like? What's happening? Let's find out.



**A THREE DAY INTEGRATED CURRICULUM WORKSHOP**

drawing  
**TO LEARN**

# An integrated curriculum project exploring community.

## What does it look like? What's happening? Let's find out.

### A practical 3 day 'hands on' workshop for teachers following an integrated classroom curriculum as they create a mural of their community.

Hooking the teachers and children in to what's happening in their community, with a focus upon engagement strategies that work.

The program can be run with groups of teachers or in a classroom alongside a teacher / assistant/ parent with the Drawing to Learn leader.

### In *My Community* the group will explore their surroundings through...

- a. Exploring what's happening in the community using an integrated planning model that includes an exhibition at the end of the final day.
- b. Developing a mural of the community.
- c. Creating a puppet that will be used to tell the story of the mural. That is, describing what is happening in the community, using an inquiry question that the participants wanted to explore.

### The educational focus will be upon:

- Cooperative learning strategies in group work
- Art/Craft/design. A different technique at each phase/task.
- Using levels of questioning to deepen the inquiry.
- Using the Australian curriculum to assist in exploring the inquiry question.
- Following a narrative structure to tell the puppet story of 'What is happening in the community?'
- Using a publishing app to record the narrative of the mural.
- Integrating the project across the curriculum areas e.g., Literacy, Language, HASS, Science, ICT, Mathematics, Art and Craft and Design.

### Costs.

Advertised 3 day program for staff from different sites is \$900 plus GST per person (*resources required included*)

Costs for a school hosted workshop - whether with children or adults is \$3200 plus GST (*cost of resources required are additional to cost of program*)



**FOR MORE INFORMATION CONTACT**

*Leith Hogan*

*email: [leith.hogan@bigpond.com](mailto:leith.hogan@bigpond.com)*